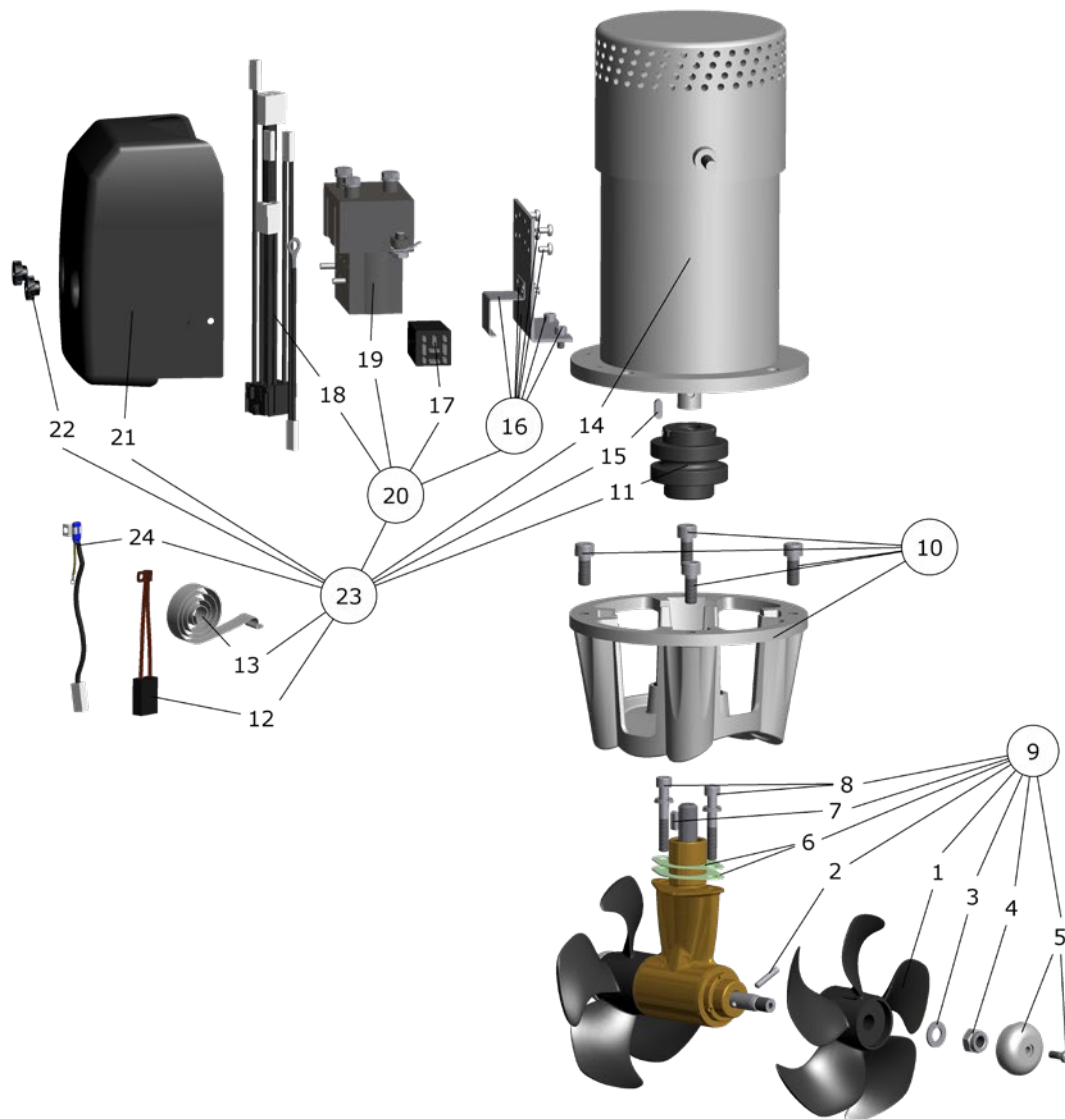
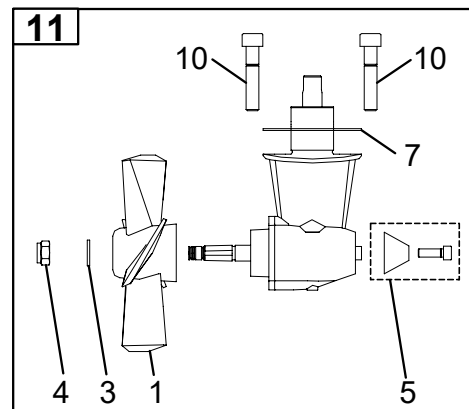
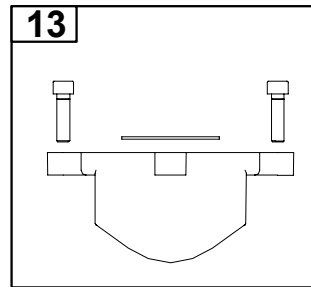
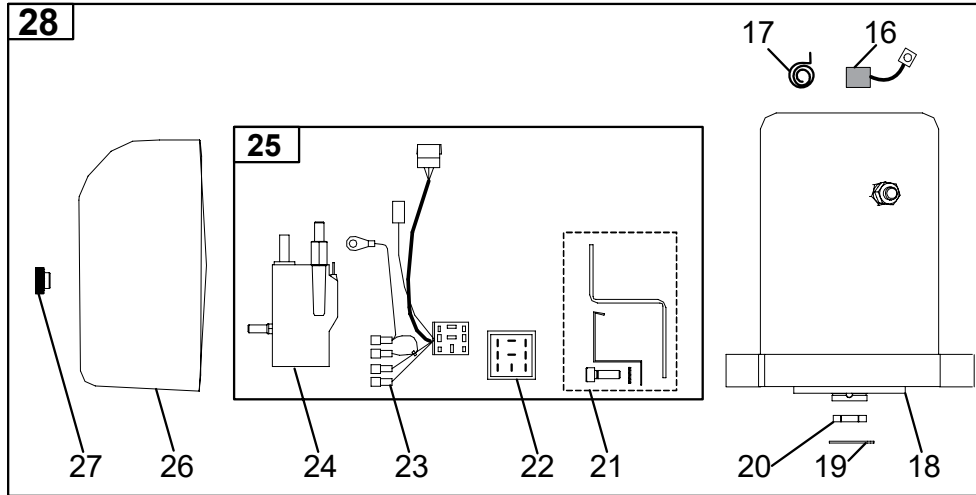


# Discontinued Tunnel Thrusters

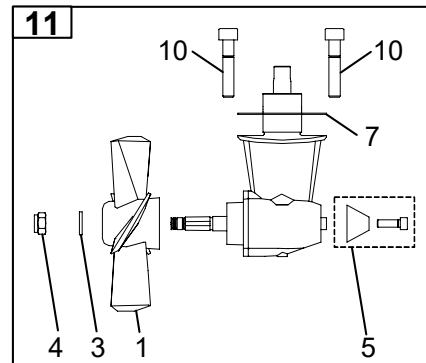
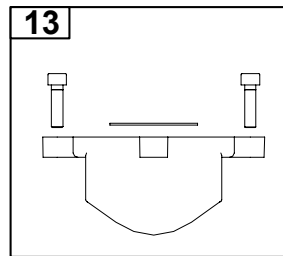
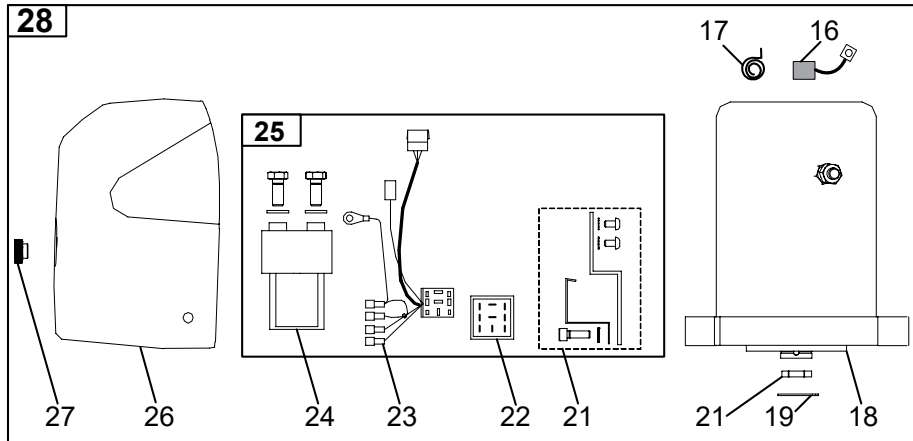
## Spare Parts List



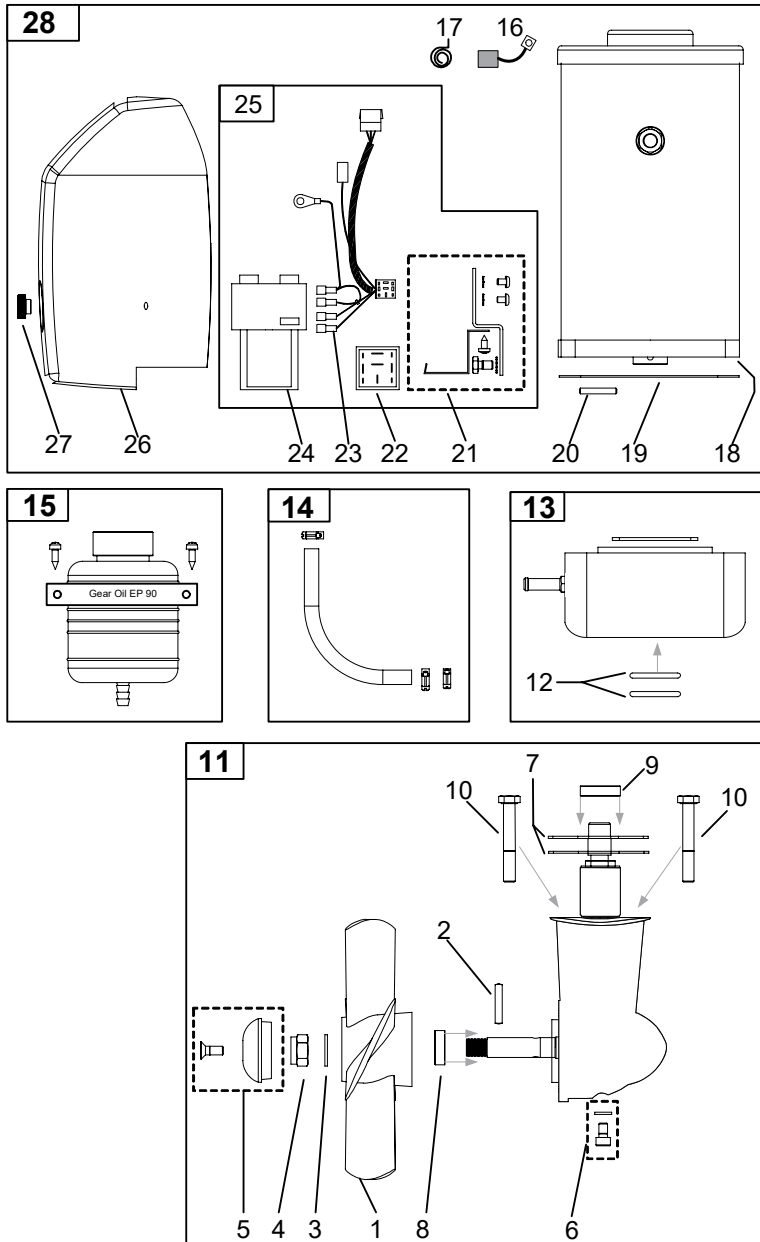
<b>Spare Part List</b> .....	<b>3-16</b>
SP30 .....	3
SP40.....	4
SP55.....	5
SP75 .....	6
SP95.....	7
SP125 .....	8
SP155.....	9
SP200.....	10
SP240TC/15HP .....	11
SP285TC/20HP.....	12
SP100HYD .....	13
SP220HYD.....	14
SP300HYD.....	15
SP550HYD.....	16



Original model	SP 30 S2i	SP 30 Si	SP 30 S
<b>Model period</b>	02/05 - 11/07	12/04 - 01/05	05/03 - 11/04
	<b>Part #</b>	<b>Part #</b>	<b>Part #</b>
<b>Ref:</b>	<b>12V</b>	<b>12V</b>	<b>12V</b>
<b>28. Complete electric motor assembly</b>	2 0101 12		
<b>27. Nut for solenoid cover</b>	6 8810	6 8807	
<b>26. Solenoid cover</b>	3 2024		
<b>25. Complete solenoid kit</b>	2 0131 12		2 0130 12
<b>24. Solenoid</b>	41571123		
<b>23. Internal wiring loom</b>	6 1200 B	6 1200 B	6 1200-I
<b>22. Electronic control box</b>	6 1232 I	6 1232 I	6 1200-I
<b>21. Solenoid bracket kit</b>	2 0135		
<b>20. Shear pin for electric motor shaft</b>	3 2050		
<b>19. Retaining ring</b>	3 1143		
<b>18. Electric motor</b>	N/A	N/A	N/A
<b>17. Brush springs for electric motor (kit)</b>	*	*	*
<b>16. Brushes for electric motor (kit)</b>	*	*	*
<b>15. Oil container with holder</b>	N/A	20 0300	
<b>14. Oil hose with hose clamps</b>	N/A	20 0400	
<b>13. Complete motor bracket</b>	3 0501		
<b>12. O-ring seals in motor bracket</b>	N/A	3 2340	
<b>11. Complete gearleg</b>	3 0601		
<b>10. Gearleg bolt</b>	3 1080		
<b>9. Drive shaft seal</b>	N/A	3 1350	
<b>8. Propeller shaft seal</b>	N/A	3 1351	
<b>7. Gasket</b>	3 1310 10		
<b>6. Oil drain screw with gasket</b>	N/A	3 1220	
<b>5. Anode</b>	3 1180 A		
<b>4. Locknut</b>	3 1250		
<b>3. Propeller washer</b>	3 1365		
<b>2. Propeller drive pin</b>	N/A	3 1240	
<b>1. Propeller</b>	3 1261	3 1260	
<b>Other comments:</b>			
*Please provide thruster serial number when ordering brushes and brush springs.			



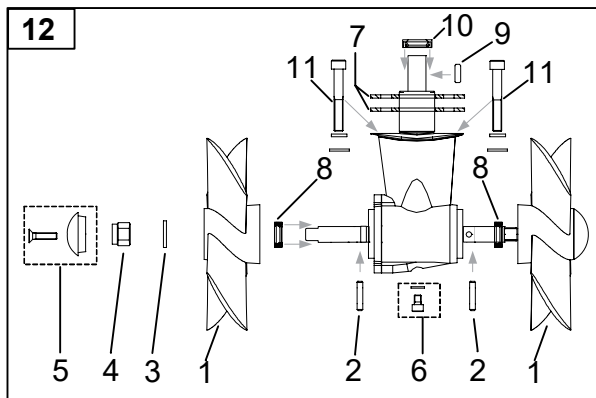
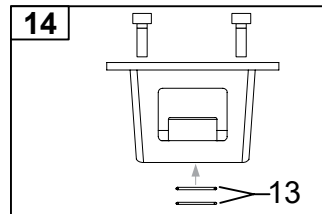
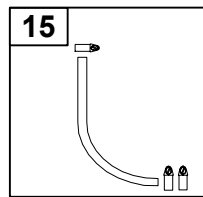
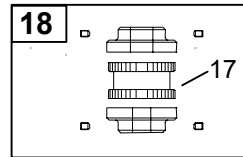
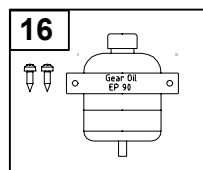
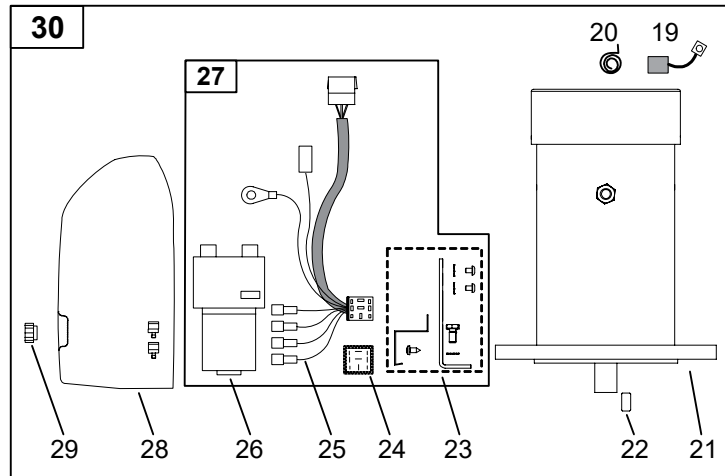
Original model	SP 40 S2i	SP 40 Si	SP 40 S	SP 35 S
<b>Model period</b>	<b>02/05 - 11/07</b>	<b>12/04 - 01/05</b>	<b>01/03 - 11/04</b>	<b>&gt; 01/03</b>
	<b>Part #</b>	<b>Part #</b>	<b>Part #</b>	<b>Part #</b>
<b>Ref:</b>	<b>12V</b>	<b>12V</b>	<b>12V</b>	<b>12V</b>
<b>28. Complete electric motor assembly</b>	3 0101 12			
<b>27. Nut for solenoid cover</b>	6 8807			
<b>26. Solenoid cover</b>	3 2026			
<b>25. Complete solenoid kit</b>	3 0131 12		3 0130 12	
<b>24. Solenoid</b>	41472123			
<b>23. Internal wiring loom</b>	6 1226 B		6 1226-I	6 1226-I
<b>22. Electronic control box</b>	6 1232 I		6 1226-I	6 1226-I
<b>21. Solenoid bracket kit</b>	3 0135			
<b>20. Shear pin for electric motor shaft</b>	3 2050			
<b>19. Retaining ring</b>	3 1143			
<b>18. Electric motor</b>	N/A			
<b>17. Brush springs for electric motor (kit)</b>	*	*	*	*
<b>16. Brushes for electric motor (kit)</b>	*	*	*	*
<b>15. Oil container with holder</b>	N/A	20 0300		
<b>14. Oil hose with hose clamps</b>	N/A	20 0400		
<b>13. Complete motor bracket</b>	3 0501	3 0500		
<b>12. O-ring seals in motor bracket</b>	N/A	3 2340		
<b>11. Complete gearleg</b>	3 0601			
<b>10. Gearleg bolt</b>	3 1080			
<b>9. Drive shaft seal</b>	N/A	3 1350		
<b>8. Propeller shaft seal</b>	N/A	3 1351		
<b>7. Gasket</b>	3 1310 10			
<b>6. Oil drain screw with gasket</b>	N/A	3 1220		
<b>5. Anode</b>	3 1180 A			
<b>4. Locknut</b>	3 1250			
<b>3. Propeller washer</b>	3 1365			
<b>2. Propeller drive pin</b>	N/A	3 1240		
<b>1. Propeller</b>	3 1261	3 1260		
<b>Other comments:</b>				
*Please provide thruster serial number when ordering brushes and brush springs.				



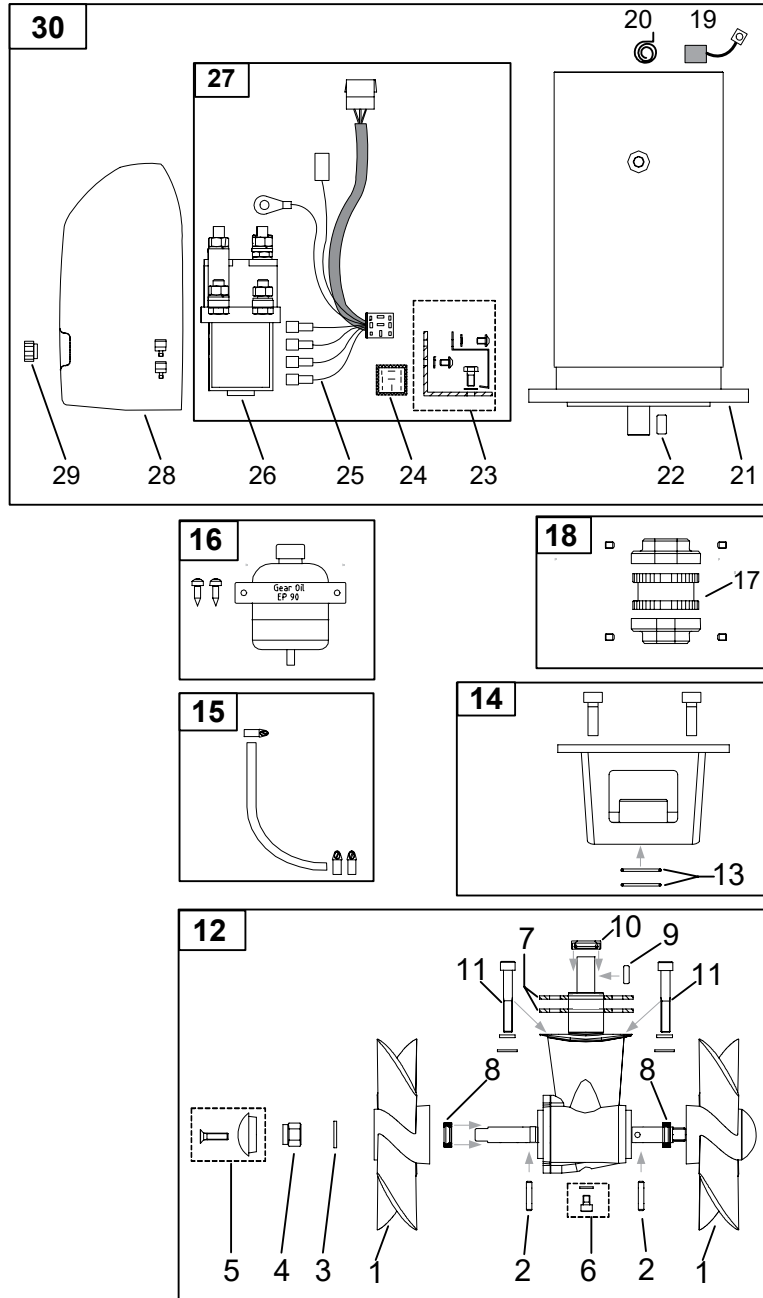
Original model	SP 55 S2i		SP 55 Si		SP 55 S		4 Hp	
	09/06 - 08/07		12/04 - 08/06		09/99 - 11/04		08/98 - 09/99	
Model period	Part #		Part #		Part #		Part #	
<b>Ref:</b>	<b>12V</b>	<b>24V</b>	<b>12V</b>	<b>24V</b>	<b>12V</b>	<b>24V</b>	<b>12V</b>	<b>24V</b>
<b>28. Complete electric motor assembly</b>	4 0101 12 / 4 0101 24							
<b>27. Nut for solenoid cover</b>	6 8807							
<b>26. Solenoid cover</b>	4 2026							
<b>25. Complete solenoid kit</b>	4 0131 12 / 4 0131 24							
<b>24. Solenoid</b>	41472123 (12V) / 41471243 (24V)							
<b>23. Internal wiring loom</b>	6 1226 B		6 1226-I		6 1226-I		6 1226-I	
<b>22. Electronic control box</b>	6 1232 I		6 1226-I		6 1226-I		6 1226-I	
<b>21. Solenoid bracket kit</b>	4 0135							
<b>20. Shear pin for electric motor shaft</b>	4 2050							
<b>19. Gasket</b>	6 1061							
<b>18. Electric motor</b>	N/A							
<b>17. Brush springs for electric motor (kit)</b>	*	*	*	*	*	*	*	*
<b>16. Brushes for electric motor (kit)</b>	*	*	*	*	*	*	*	*
<b>15. Oil container with holder</b>	N/A		20 0300					
<b>14. Oil hose with hose clamps</b>	N/A		20 0400					
<b>13. Complete motor bracket</b>	4 0501		4 0500					
<b>12. O-ring seals in motor bracket</b>	N/A		4 2340					
<b>11. Complete gearleg</b>	4 0602							
<b>10. Gearleg bolt</b>	6 1080							
<b>9. Drive shaft seal</b>	N/A		7 1350					
<b>8. Propeller shaft seal</b>	N/A		6 1350					
<b>7. Gaskets</b>	4 0610							
<b>6. Oil drain screw with gasket</b>	N/A		6 1220					
<b>5. Anode</b>	7 1190 A					6 1180		
<b>4. Locknut</b>	4 1260							
<b>3. Propeller washer</b>	7 1181							
<b>2. Propeller drive pin</b>	6 1241							
<b>1. Propeller</b>	7 1261		7 1260				7 1250	

**Other comments:**

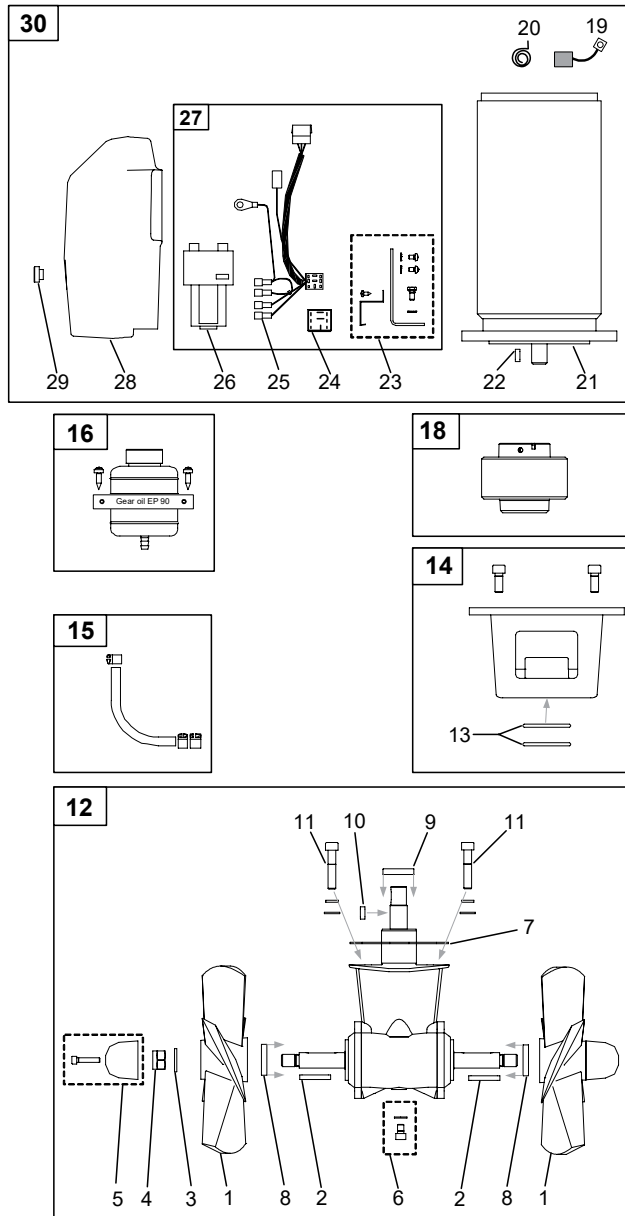
\*Please provide thruster serial number when ordering brushes and brush springs.



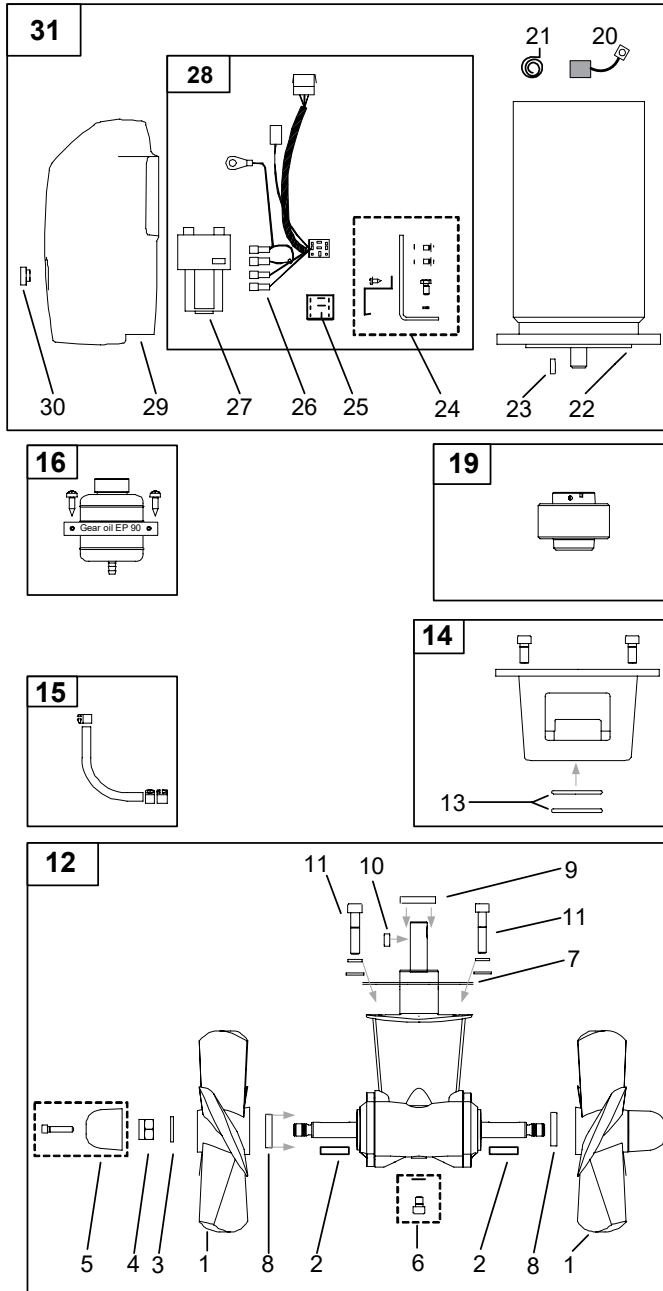
Original model	SP 75 Ti		SP 75 T	
	Model period		Model period	
	12/04 - 08/07		10/99 - 11/04	
	Part #		Part #	
Ref:	12V	24V	12V	24V
<b>30. Complete electric motor assembly</b>	6 0101 12 / 6 0101 24			
29. Nut for solenoid cover	6 8810			
28. Solenoid cover	6 2025			
27. Complete solenoid kit	6 0131 12 / 6 0131 24			
26. Solenoid	41371123	41371243	41371123	41371243
25. Internal wiring loom	6 1226 B		6 1226-I	6 1226-I
24. Electronic control box	6 1232 I		6 1226-I	6 1226-I
23. Solenoid bracket kit	6 0135			
22. Key for electric motor shaft	10 1440			
21. Electric motor	N/A			
20. Brush springs for electric motor (kit)	*	*	*	*
19. Brushes for electric motor (kit)	*	*	*	*
<b>18. Complete flexible coupling</b>	7 1450			
17. Rubber element	7 1451			
<b>16. Oil container with holder</b>	20 0300			
<b>15. Oil hose with hose clamps</b>	20 0400			
<b>14. Complete motor bracket</b>	8 0500			
13. O-ring seals in motor bracket	7 1340			
<b>12. Complete gearleg</b>	8 0600			
11. Gearleg bolt	7 1080			
10. Drive shaft seal	7 1350			
9. Drive shaft key	6 1440			
8. Propeller shaft seal	6 1350			
7. Gasket (kit)	8 0610			
6. Oil drain screw with gasket	6 1220			
5. Anode	7 1190 A			
4. Locknut	4 1260			
3. Propeller washer	7 1181			
2. Propeller drive pin	6 1241			
1. Propeller	7 1260			
<b>Other comments:</b>				
*Please provide thruster serial number when ordering brushes and brush springs.				



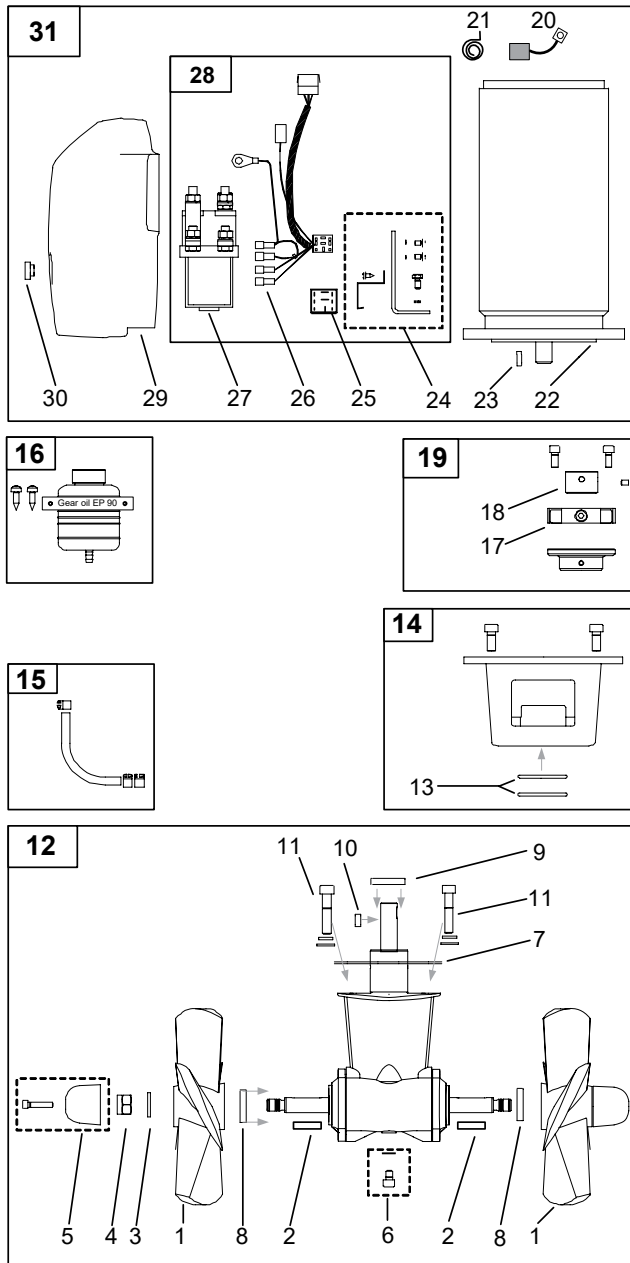
Original model	SP 95 Ti		SP 95 T	
	Model period		Model period	
	12/04 - 08/07		03/00 - 11/04	
	Part #		Part #	
Ref:	12V	24V	12V	24V
<b>30. Complete electric motor assembly</b>	8 0101 12 / 8 0101 24			
29. Nut for solenoid cover	6 8810			
28. Solenoid cover	8 2025 (12V) / 8 2026 (24V)			
27. Complete solenoid kit	9 0131 12	10 0131 24	8 0131 12	10 0131 24
26. Solenoid	1013713 (12V) / 41371243 (24V)			
25. Internal wiring loom	15 1273 B	6 1226 B	15 1273-I	6 1226-I
24. Electronic control box	6 1232 I		15 1273-I / 6 1226-I	
23. Solenoid bracket kit	10 0135 12 / 10 1040 24			
22. Key for electric motor shaft	10 1440			
21. Electric motor	N/A			
20. Brush springs for electric motor (kit)	*	*	*	*
19. Brushes for electric motor (kit)	*	*	*	*
<b>18. Complete flexible coupling</b>	7 1450			
17. Rubber element	7 1451			
<b>16. Oil container with holder</b>	20 0300			
<b>15. Oil hose with hose clamps</b>	20 0400			
<b>14. Complete motor bracket</b>	8 0500			
13. O-ring seals in motor bracket	7 1340			
<b>12. Complete gearleg</b>	8 0600			
11. Gearleg bolt	7 1080			
10. Drive shaft seal	7 1350			
9. Drive shaft key	6 1440			
8. Propeller shaft seal	6 1350			
7. Gasket (kit)	8 0610			
6. Oil drain screw with gasket	6 1220			
5. Anode	7 1190 A			
4. Locknut	4 1260			
3. Propeller washer	7 1181			
2. Propeller drive pin	6 1241			
1. Propeller	7 1260			
<b>Other comments:</b>				
*Please provide thruster serial number when ordering brushes and brush springs.				



Original model	SP 125 Ti		SP 125 T	
	Model period		Model period	
	12/04 <		05/02 - 11/04	
	Part #		Part #	
Ref:	12V	24V	12V	24V
<b>30. Complete electric motor assembly</b>	9 0101 12 / 9 0101 24			
<b>29. Nut for solenoid cover</b>	6 8810			
<b>28. Solenoid cover</b>	8 2025 (12V) / 8 02026 (24V)			
<b>27. Complete solenoid kit</b>	9 0131 12	10 0131 24	9 0130 12	10 0131 24
<b>26. Solenoid</b>	1013713 (12V) / 41371243 (24V)			
<b>25. Internal wiring loom</b>	15 1273 B	6 1226 B	15 1273-I	6 1226-I
<b>24. Electronic control box</b>	6 1232 I		15 1273-I 6 1226-I	
<b>23. Solenoid bracket kit</b>	10 0135 24 (12V) / 10 1040 24 (24V)			
<b>22. Key for electric motor shaft</b>	10 1440			
<b>21. Electric motor</b>	N/A			
<b>Brush springs for electric motor (kit)</b>	*	*	*	*
<b>19. Brushes for electric motor (kit)</b>	*	*	*	*
<b>18. Complete flexible coupling</b>	7 1463			
<b>17. Rubber element</b>	N/A			
<b>16. Oil container with holder</b>	20 0300			
<b>15. Oil hose with hose clamps</b>	20 0400			
<b>14. Complete motor bracket</b>	10 0500			
<b>13. O-ring seals in motor bracket</b>	10 1340			
<b>12. Complete gearleg</b>	9 0601			
<b>11. Gearleg bolt</b>	10 1080			
<b>10. Drive shaft key</b>	10 1440			
<b>9. Drive shaft seal</b>	20 1351			
<b>8. Propeller shaft seal</b>	20 1350			
<b>7. Gasket</b>	9 0610			
<b>6. Oil drain screw with gasket</b>	10 1220			
<b>5. Anode</b>	20 1180 A			
<b>4. Locknut</b>	10 1260			
<b>3. Propeller washer</b>	20 1181			
<b>2. Propeller key</b>	10 1241			
<b>1. Propeller</b>	10 1270 RH			
<b>Other comments:</b>				
*Please provide thruster serial number when ordering brushes and brush springs.				

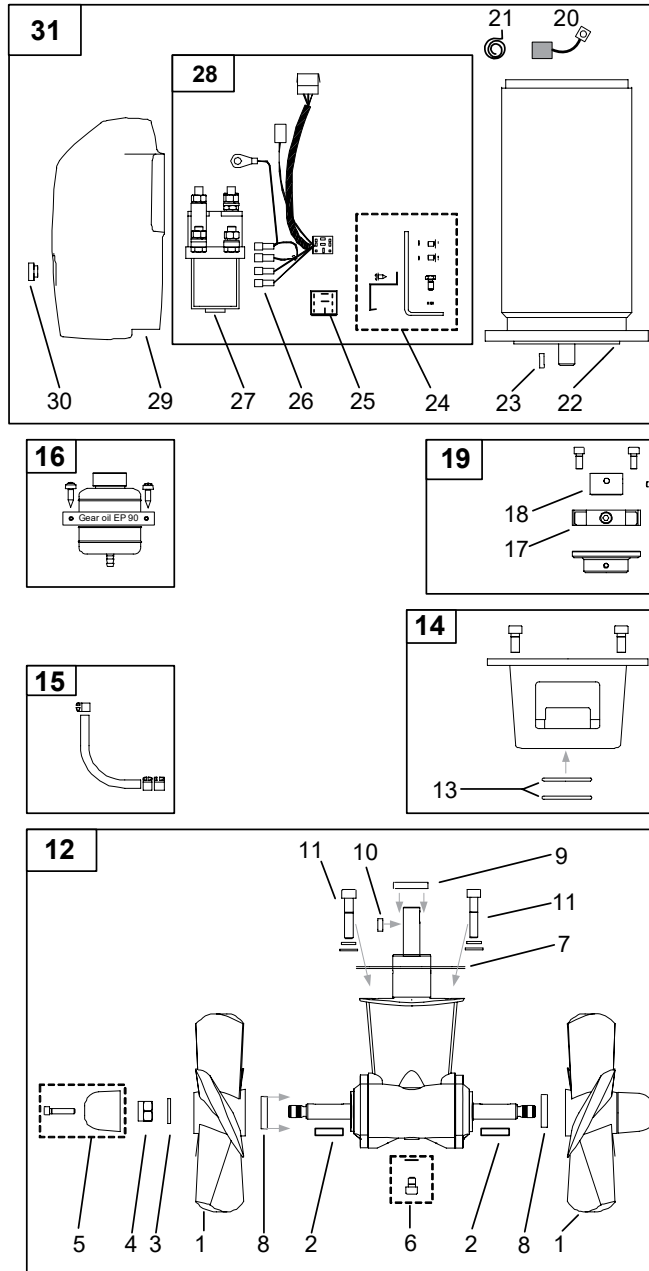


Original model	SP 155 TCi	SP 155 TC	10 Hp (10100)
	12/04 <	10/99 - 11/04	03/94 - 09/99
Model period	Part #	Part #	Part #
<b>Ref:</b>	<b>24V</b>	<b>24V</b>	<b>24V</b>
<b>Complete electric motor assembly</b>	10 0101 24		
31. Nut for solenoid cover	6 8810	-	-
29. Solenoid cover	10 2025	-	-
28. Complete solenoid kit	10 0131 24	-	-
27. Solenoid	41371243		
26. Internal wiring loom	6 1226 B	6 1226-I	6 1226-I
25. Electronic control box	6 1232 I	6 1226-I	6 1226-I
24. Solenoid bracket kit	10 0140 24	-	-
23. Key for electric motor shaft	10 1440		
22. Electric motor	N/A		
21. Brush springs for electric motor (kit)	*	*	*
20. Brushes for electric motor (kit)	*	*	*
<b>19. Complete flexible coupling</b>	7 1463		
18. Hub flexible coupling	N/A		
17. Rubber element	N/A		
16. Oil container with holder	20 0300		
15. Oil hose with hose clamps	20 0400		
14. Complete motor bracket	10 0500		
13. O-ring seals in motor bracket	10 1340		
12. Complete gearleg	13 0602		
11. Gearleg bolt	10 1080		
10. Drive shaft key	10 1440		
9. Drive shaft seal	20 1351		10 1350
8. Propeller shaft seal	20 1350		10 1350
7. Gasket	10 1312		
6. Oil drain screw with gasket	10 1220		
5. Anode	20 1180 A		
4. Locknut	10 1260		
3. Propeller washer	20 1181		
2. Propeller key	10 1241		
1. Propeller	10 1270 ***	10 1270 ***	10 1270
<b>Other comments:</b>	***Need to indicate if this is a left hand (LH) or right hand (RH) propeller.	***Need to indicate if this is a left hand (LH) or right hand (RH) propeller.	
*Please provide thruster serial number when ordering brushes and brush springs.			



Original model	SP 200 TCi	SP 200 TC
	12/04 <	06/00 - 11/04
	Part #	Part #
<b>Ref:</b>	<b>24V</b>	<b>24V</b>
<b>31. Complete electric motor assembly</b>	13 0101 24	
<b>30. Nut for solenoid cover</b>	6 8810	
<b>29. Solenoid cover</b>	20 2027	
<b>28. Complete solenoid kit</b>	15 0131 24	
<b>27. Solenoid</b>	1013703	
<b>26. Internal wiring loom</b>	15 1273 B	15 1273-I
<b>25. Electronic control box</b>	6 1232 I	15 1273-I
<b>24. Solenoid bracket kit</b>	10 0135 24	
<b>23. Key for electric motor shaft</b>	10 1440	
<b>22. Electric motor</b>	N/A	
<b>21. Brush springs for electric motor (kit)</b>	*	*
<b>20. Brushes for electric motor (kit)</b>	*	*
<b>19. Complete flexible coupling</b>	20 1450 TC	
<b>18. Hub flexible coupling</b>	20 1453	
<b>17. Rubber element</b>	20 1452	
<b>16. Oil container with holder</b>	20 0300	
<b>15. Oil hose with hose clamps</b>	20 0400	
<b>14. Complete motor bracket</b>	13 0500	
<b>13. O-ring seals in motor bracket</b>	10 1340	
<b>12. Complete gearleg</b>	13 0602	
<b>11. Gearleg bolt</b>	10 1080	
<b>10. Drive shaft key</b>	10 1440	
<b>9. Drive shaft seal</b>	20 1351	
<b>8. Propeller shaft seal</b>	20 1350	
<b>7. Gasket</b>	10 1312	
<b>6. Oil drain screw with gasket</b>	10 1220	
<b>5. Anode</b>	20 1180 A	
<b>4. Locknut</b>	10 1260	
<b>3. Propeller washer</b>	20 1181	
<b>2. Propeller key</b>	10 1241	
<b>1. Propeller</b>	10 1270***	10 1270***
<b>Other comments:</b>	***Need to indicate if this is a left hand (LH) or right hand (RH) propeller.	*** Need to indicate if this is a left hand (LH) or right hand (RH) propeller.

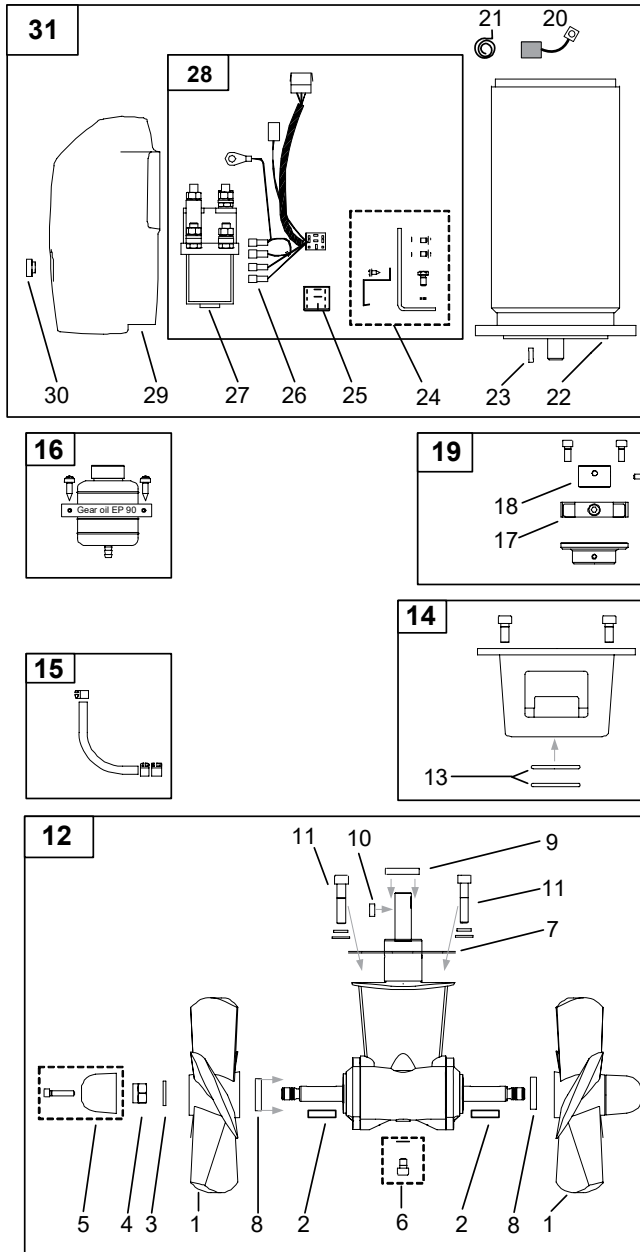
\*Please provide thruster serial number when ordering brushes and brush springs.



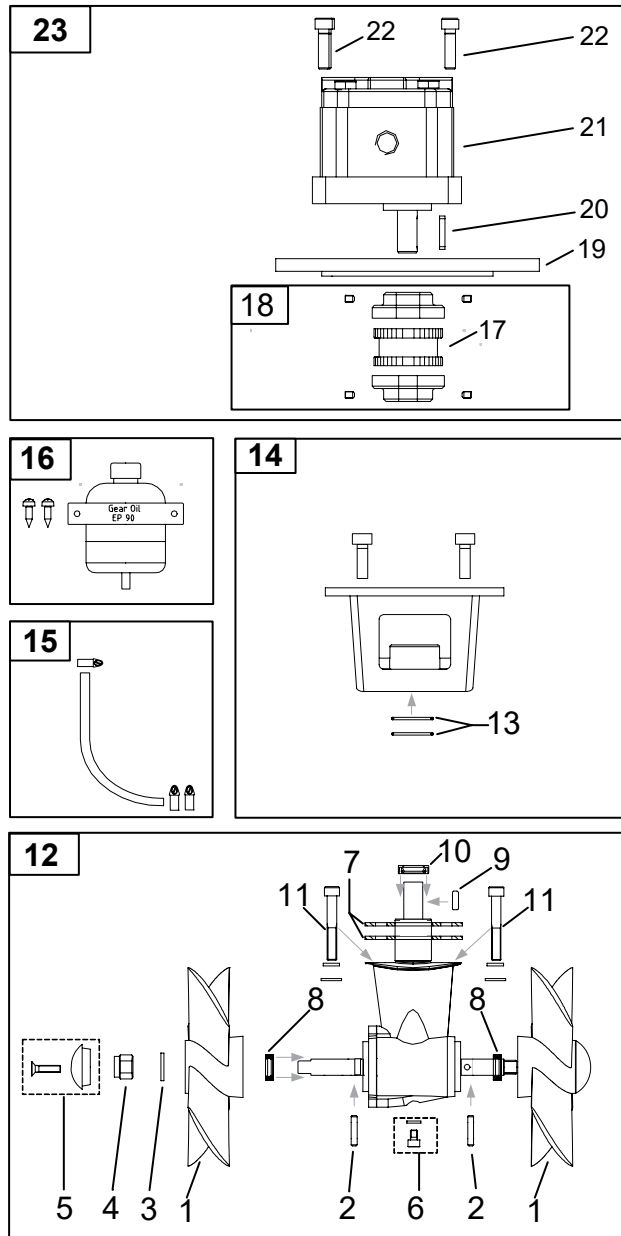
Original model	SP 240 TCi	SP 220 TC	15 Hp (20150)
Model period	12/04 <	10/99 - 11/04	10/97 - 09/99
Ref:	Part #	Part #	Part #
31. Complete electric motor assembly		15 0101 24	
30. Nut for solenoid cover		6 8810	
29. Solenoid cover	20 2027		-
28. Complete solenoid kit	15 0131 24		-
27. Solenoid		1013703	
26. Internal wiring loom	15 1273 B		10 1268
25. Electronic control box	6 1232 I	15 1273-I	
24. Solenoid bracket kit	10 0135 24		-
23. Key for electric motor shaft		20 1440	
22. Electric motor		N/A	
21. Brush springs for electric motor (kit)	*	*	*
20. Brushes for electric motor (kit)	*	*	*
19. Complete flexible coupling		20 1450	
18. Hub flexible coupling		20 1453	
17. Rubber element		20 1452	
16. Oil container with holder		20 0300	
15. Oil hose with hose clamps		20 0400	
14. Complete motor bracket		20 0500	
13. O-ring seals in motor bracket		20 1340	
12. Complete gearleg		20 0600	
11. Gearleg bolt		20 1080	
10. Drive shaft key		10 1440	
9. Drive shaft seal		20 1351	
8. Propeller shaft seal		20 1350	
7. Gasket		20 1312	
6. Oil drain screw with gasket		10 1220	
5. Anode		20 1180 A	
4. Locknut		10 1260	
3. Propeller washer		20 1181	
2. Propeller key		10 1241	
1. Propeller		20 110***	

**Other comments:** \*\*\*Need to indicate if this is a left hand (LH) or right hand (RH) propeller.

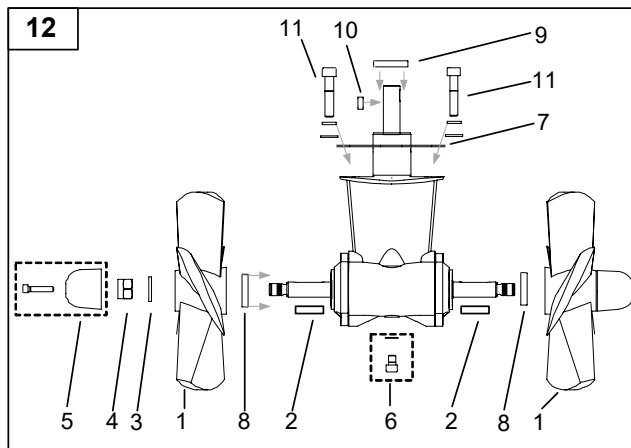
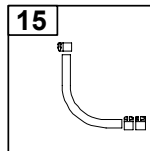
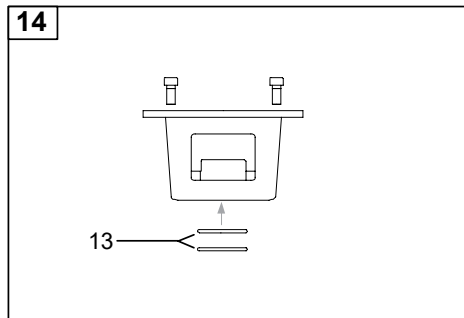
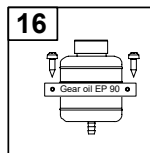
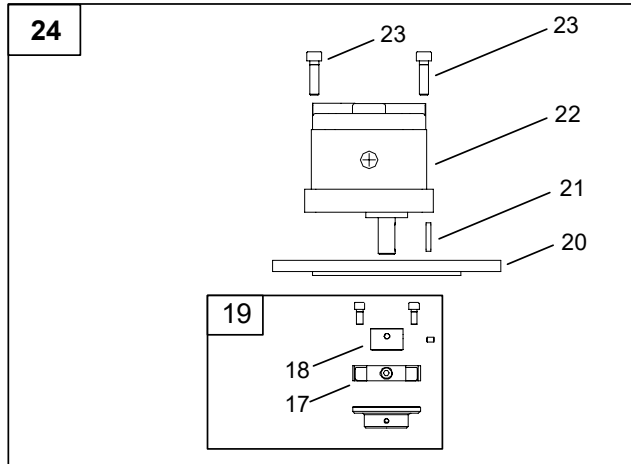
\*Please provide thruster serial number when ordering brushes and brush springs.



Original model	SP 285 TCi	SP 285 TC	20 Hp (20200)
Model period	12/04 <	10/99 - 11/04	10/97 - 09/99
Ref:	Part #	Part #	Part #
<b>31. Complete electric motor assembly</b>		20 0101 48	
<b>30. Nut for solenoid cover</b>		6 8810	
<b>29. Solenoid cover</b>		20 2027	
<b>28. Complete solenoid kit</b>	20 0131 48	20 0131 48 KIT	-
<b>27. Solenoid</b>		1013703	
<b>26. Internal wiring loom</b>	20 1273 B	20 1273-I	20 1273-I
<b>25. Electronic control box</b>	6 1232 I	20 1273-I	20 1273-I
<b>24. Solenoid bracket kit</b>		10 0135 24	
<b>23. Key for electric motor shaft</b>		20 1440	
<b>22. Electric motor</b>		N/A	
Brush springs for electric motor (kit)	*	*	*
<b>21. Brushes for electric motor (kit)</b>	*	*	*
<b>19. Complete flexible coupling</b>		20 1450	
<b>18. Hub flexible coupling</b>		20 1453	
<b>17. Rubber element</b>		20 1452	
<b>16. Oil container with holder</b>		20 0300	
<b>15. Oil hose with hose clamps</b>		20 0400	
<b>14. Complete motor bracket</b>		20 0500	
<b>13. O-ring seals in motor bracket</b>		20 1340	
<b>12. Complete gearleg</b>		20 0600	
<b>11. Gearleg bolt</b>		20 1080	
<b>10. Drive shaft key</b>		10 1440	
<b>9. Drive shaft seal</b>		20 1351	
<b>8. Propeller shaft seal</b>		20 1350	
<b>7. Gasket</b>		20 1312	
<b>6. Oil drain screw with gasket</b>		10 1220	
<b>5. Anode</b>		20 1180 A	
<b>4. Locknut</b>		10 1260	
<b>3. Propeller washer</b>		20 1181	
<b>2. Propeller key</b>		10 1241	
<b>1. Propeller</b>		20 110***	
<b>Other comments:</b>	***Need to indicate if this is a left hand (LH) or right hand (RH) propeller.		
*Please provide thruster serial number when ordering brushes and brush springs.			

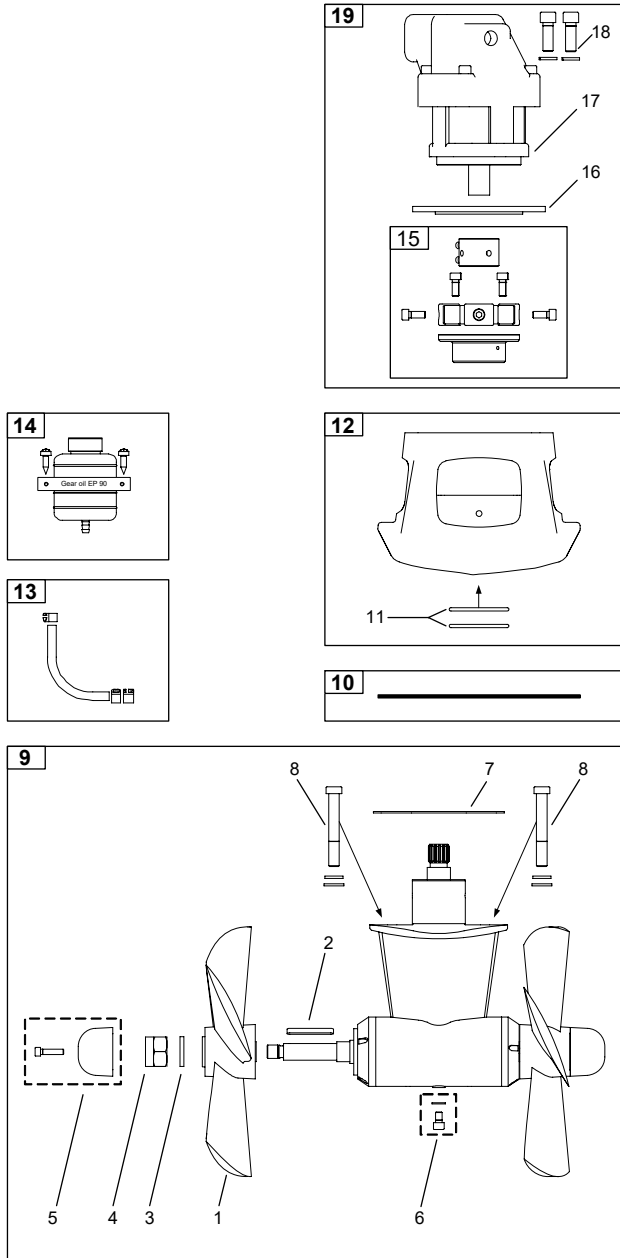


Original model	SP 100 HYD
Model period	11/02 - 08/07
	<b>Part #</b>
<b>Ref:</b>	
<b>23. Complete hyd. motor assembly options:</b>	
SP100HYD motor, U-04, complete	72104UL2
SP100HYD motor, U-06, complete	72100UL2
SP100HYD motor, U-08, complete	72110UL2
SP100HYD motor, U-10, complete	72115UL2
<b>22.</b> Hydraulic motor bolts (4 pcs.)	6 1360
<b>21.</b> Hydraulic motor options:	
U-04 (4ccm)	72100/U-04
U-06 (6ccm)	72100/U-06
U-08 (8ccm)	72100/U-08
U-10 (10ccm)	72100/U-10
<b>20.</b> Drive shaft key	7 1440
<b>19.</b> Adaptor plate	10 21301
<b>18.</b> Complete flexible coupling	7 1454
<b>17.</b> Rubber element	7 1451
<b>16.</b> Oil container with holder	20 0300
<b>15.</b> Oil hose with hose clamps	20 0400
<b>14.</b> Complete motor bracket	8 0500
<b>13.</b> O-ring seals in motor bracket	7 1340
<b>12.</b> Complete gearleg	8 0601
<b>11.</b> Gearleg bolt	7 1080
<b>10.</b> Drive shaft seal	7 1350
<b>9.</b> Drive shaft key	6 1440
<b>8.</b> Propeller shaft seal	6 1350
<b>7.</b> Gasket	8 0610
<b>6.</b> Oil drain screw w ith gasket	6 1220
<b>5.</b> Zinc anode	7 1190
<b>4.</b> Locknut	4 1260
<b>3.</b> Propeller w asher	7 1181
<b>2.</b> Propeller drive pin	6 1241
<b>1.</b> Propeller	7 1260
<b>Other comments:</b>	



Original model	SP 220 HYD
<b>Model period</b>	<b>11/02 &lt;</b>
<b>Ref:</b>	<b>Part #</b>
<b>24. Complete hyd. motor assembly options:</b>	
SP220HYD motor, U-08, complete, w /flex. coupling	72110UL3
SP220HYD motor, U-10, complete, w /flex. coupling	72115UL3
SP220HYD motor, U-11, complete, w /flex. coupling	102100UL2
SP220HYD motor, U-14, complete, w /flex. coupling	102110UL2
SP220HYD motor, U-16, complete, w /flex. coupling	102115UL2
SP220HYD motor, U-19, complete, w /flex. coupling	102120UL2
<b>23. Hydraulic motor bolts (4 pcs.)</b>	<b>6 1360</b>
<b>22. Hydraulic motor options:</b>	
U-08 (8ccm)	72100/U-08
U-10 (10ccm)	72100/U-10
U-11 (11ccm)	72100/U-11
U-14 (14ccm)	72100/U-14
U-16 (16ccm)	72100/U-16
U-19 (19ccm)	72100/U-19
<b>21. Drive shaft key</b>	<b>7 1440</b>
<b>20. Adaptor plate</b>	<b>10 21301</b>
<b>19. Complete flexible coupling</b>	<b>10 1450HYD</b>
<b>18. Hub flexible coupling</b>	<b>10 1453</b>
<b>17. Rubber element</b>	<b>10 1452</b>
<b>16. Oil container with holder</b>	<b>20 0300</b>
<b>15. Oil hose with hose clamps</b>	<b>20 0400</b>
<b>14. Complete motor bracket</b>	<b>10 0500</b>
<b>13. O-ring seals in motor bracket</b>	<b>10 1340</b>
<b>12. Complete gearleg</b>	<b>13 0600</b>
<b>11. Gearleg bolt</b>	<b>10 1080</b>
<b>10. Drive shaft key</b>	<b>10 1440</b>
<b>9. Drive shaft seal</b>	<b>20 1351</b>
<b>8. Propeller shaft seal</b>	<b>20 1350</b>
<b>7. Gasket</b>	<b>10 1312</b>
<b>6. Oil drain screw w ith gasket</b>	<b>10 1220</b>
<b>5. Zinc anode</b>	<b>20 1180</b>
<b>4. Locknut</b>	<b>10 1260</b>
<b>3. Propeller w asher</b>	<b>20 1181</b>
<b>2. Propeller key</b>	<b>10 1241</b>
<b>1. Propeller</b>	<b>10 1270 ??</b>
<b>Other comments:</b>	?? Need to indicate if this is a left hand (LH) or right hand (RH) propeller.





Original model	SP 550 HYD
<b>Model period</b>	01/01 <
	<b>Part #</b>
<b>Ref:</b>	
<b>19. Complete hyd. motor assembly options:</b>	
SP550HYD motor, U-26, complete, w/flex. coupling	502126UL2
SP550HYD motor, U-29, complete, w/flex. coupling	502129UL2
SP550HYD motor, U-33, complete, w/flex. coupling	502133UL2
SP550HYD motor, U-37, complete, w/flex. coupling	502137UL2
SP550HYD motor, U-50, complete, w/flex. coupling	502150UL2
SP550HYD motor, P-42, complete, w/flex. coupling	502142UL
SP550HYD motor, P-52, complete, w/flex. coupling	502152UL
SP550HYD motor, PRO-40, complete, w/flex. coup.	502140V2
SP550HYD motor, PRO-60, complete, w/flex. coup.	502160V2
<b>18. Hydraulic motor bolts</b>	
Hydraulic motor bolts for "U" motors (2 pcs.)	50 1367
Hydraulic motor bolts for "P" and "PRO" motors (4)	50 1366
<b>17. Hydraulic motor options:</b>	
U-26 (26ccm)	72100/U-26
U-29 (29ccm)	72100/U-29
U-33 (33ccm)	72100/U-33
U-37 (37ccm)	72100/U-37
U-50 (50ccm)	72100/U-50
P-42 (42ccm)	72100/P-42
P-52 (52ccm)	72100/P-52
PRO-40 (40ccm)	72100/PRO-40
PRO-60 (60ccm)	72100/PRO-60
<b>16. Adaptor plate</b>	
Adaptor plate for "U" motors	5021301
Adaptor plate for "P" and "PRO" motors	5021302
<b>15. Complete flexible coupling</b>	
Complete flexible coupling for "U" motors	50 1450 HYD
Complete flexible coupling for "P" and "PRO" motors	50 1460 HYD
<b>14. Oil container with holder</b>	20 0300
<b>13. Oil hose with hose clamps</b>	20 0400
<b>12. Complete motor bracket</b>	50 0500
<b>11. O-ring seals in motor bracket</b>	50 1340
<b>10. Gasket (between motor bracket and tunnel)</b>	50 1313
<b>9. Complete gearleg</b>	50 0600
<b>8. Gearleg bolt</b>	50 1080
<b>7. Gasket (betw een gearleg and tunnel)</b>	50 1312
<b>6. Oil drain screw with gasket</b>	50 1220
<b>5. Zinc anode</b>	50 1180
<b>4. Locknut</b>	50 1260
<b>3. Propeller washer</b>	50 1181
<b>2. Propeller key</b>	50 1241
<b>1. Propeller</b>	50 1270??
<b>Other comments:</b>	?? Need to indicate if this is a left hand (LH) or right hand (RH) propeller.









# SLEIPNER

*Ocean born. Tech bred.*

**SLEIPNER MOTOR AS**

P.O. Box 519

N-1612 Fredrikstad

Norway

[www.sleipnergroup.com](http://www.sleipnergroup.com)

Made in Norway

© Sleipner Motor AS, All rights reserved

The information given in the document was right at the time it was published. However, Sleipner Motor AS cannot accept liability for any inaccuracies or omissions it may contain. Continuous product improvement may change the product specifications without notice. Therefore, Sleipner Motor AS cannot accept liability for any possible differences between product and document. Learn more about our products at [www.sleipnergroup.com](http://www.sleipnergroup.com)